

MILGARD®

C700
Delta Mull
Anchor
**Installation
Instructions**

By MITER Brands™

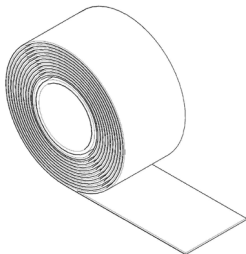
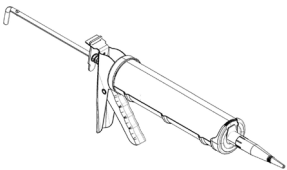
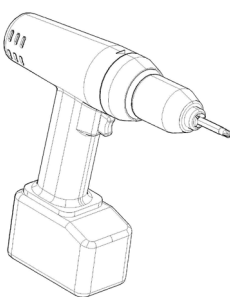
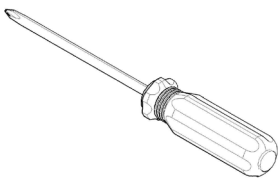
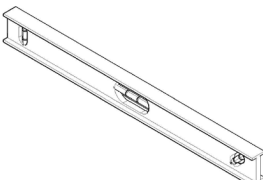
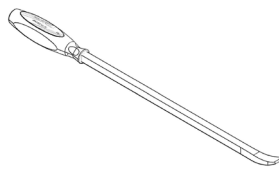
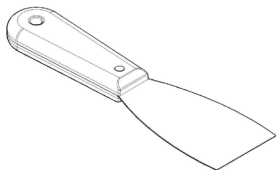
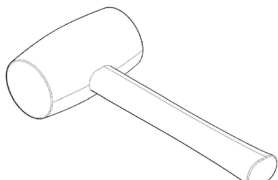
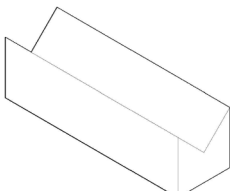
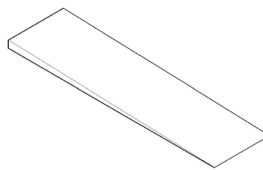


Things to Know Before You Start

1. These instructions only address anchoring of factory-mulled units in wood or steel frame construction. This anchoring step is in addition to Milgard's standard installation guidelines that should also be followed.
2. This set of instructions applies to both vertical and horizontal mulled units.
3. Milgard's mullion products are rated for performance based on the specific items and fasteners included with the mull kit. Any deviation from these guidelines or substitutions/use of parts not provided with the kit could affect the performance of the window unit.
4. Jobsite and worker protections are recommended and may be required. Follow all manufacturers' instructions for appropriate and safe use of protective equipment, tools, materials, hardware, and site protections necessary for anchoring and installing the window products.
5. It is the sole responsibility of the owner, architect, and/or builder to select and install products to be in compliance with applicable laws, site requirements and building codes. Failure to follow these recommendations, local requirements, or good building practices may affect the availability of remedies under Milgard's warranty.
6. Important: Proper anchoring of a mullion requires securing fasteners into rough opening framing members. This has the potential to impact the flashing and water management systems at a product opening. Consult the responsible system supplier or responsible owner, architect and/or builder to ensure that mullion anchoring is effective and in compliance with applicable laws, site requirements and building codes.

Things to Know Before You Start

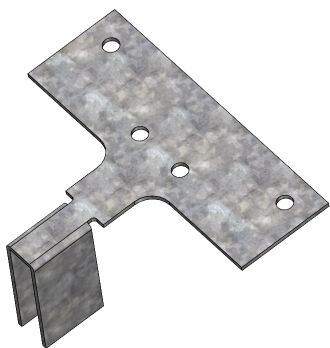
PARTS NECESSARY FOR INSTALLATION (NOT INCLUDED)

 <p>FLASHING MEMBRANE</p>	 <p>SEALANT Compatible with flashing membrane</p>	 <p>IMPACT DRIVER With #2 Phillips bit</p> <p>DRILL With 6" long 9/64" drill bit</p> <p>HAMMER DRILL With 1/4" bit (only required for masonry installation)</p>	
 <p>#2 PHILLIPS SCREWDRIVER</p>	 <p>LEVELS OF VARIOUS SIZE/LASER LEVEL</p>	 <p>PRY BAR</p>	 <p>PUTTY KNIFE</p>
 <p>DEAD BLOW RUBBER Mallet</p>	 <p>PLASTIC BLOCK</p>	 <p>SHIMS*</p>	

*Except in circumstances where a particular shim type is specified by applicable building codes – either wedge shims or horseshoe shims may be used. Shimming must be even across the window unit. Each shim must be long enough to cover the full depth of the window frame

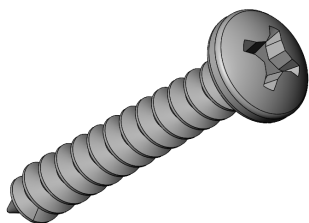
Things to Know Before You Start

OTHER PARTS NECESSARY FOR INSTALLATION



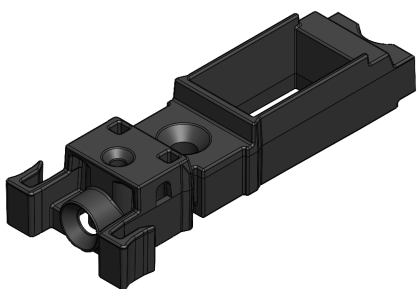
Mull Anchor

RF4302GA - (2 per mull)



Fastener for Mull Anchor

FA0821SS - (2 per mull)

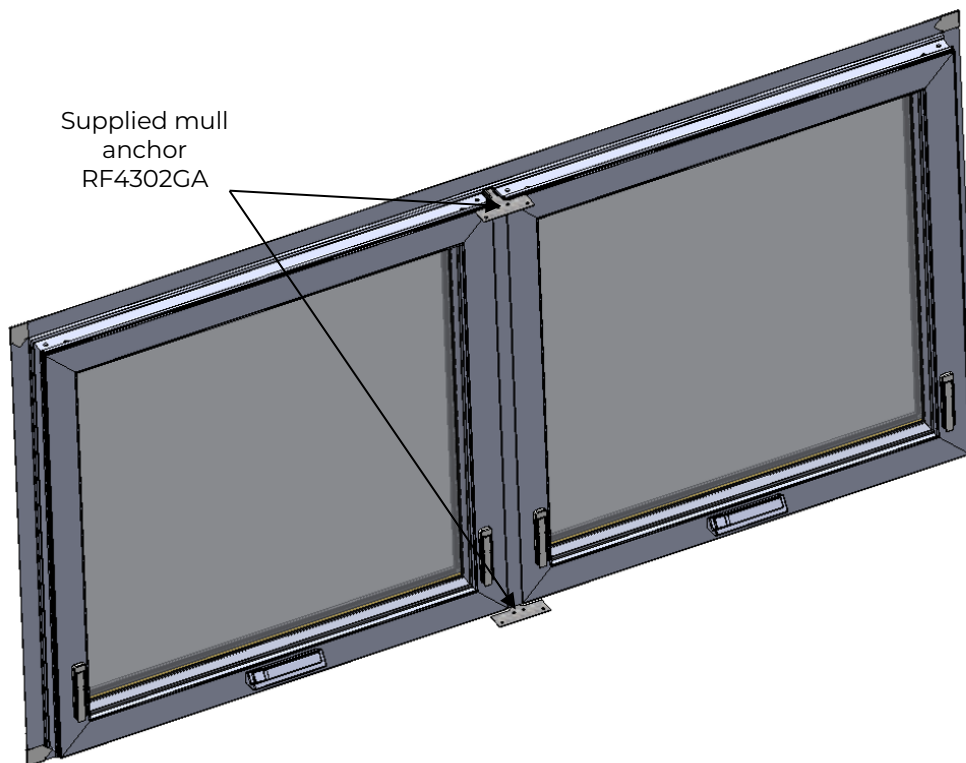
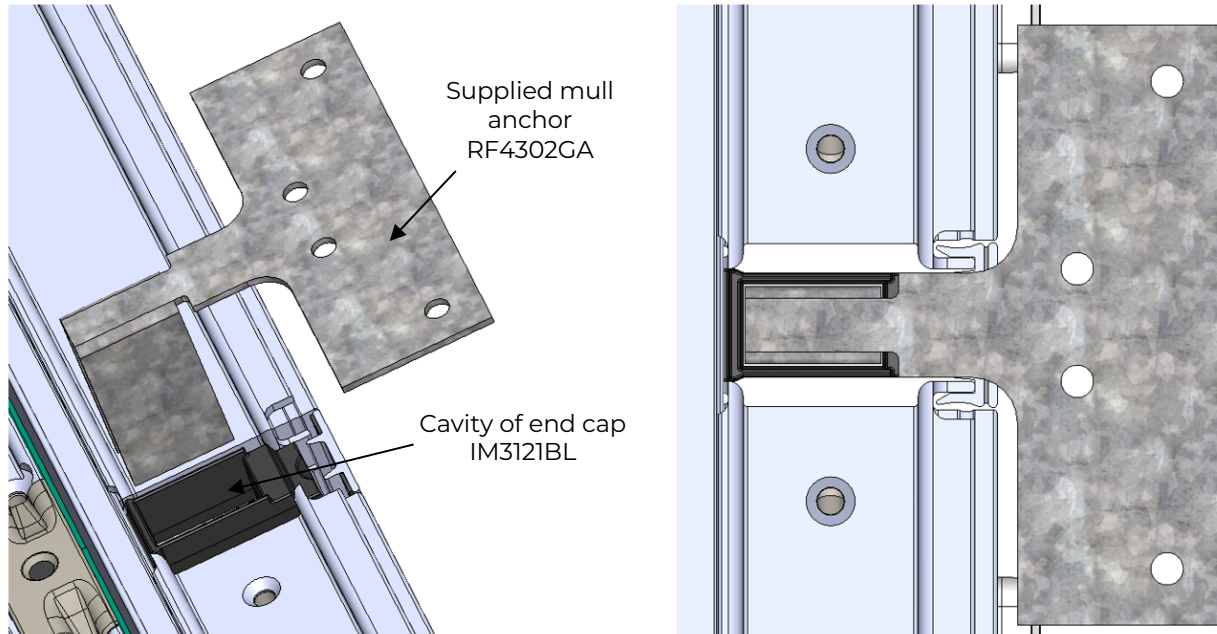


End Cap

IM3121BL (already installed)

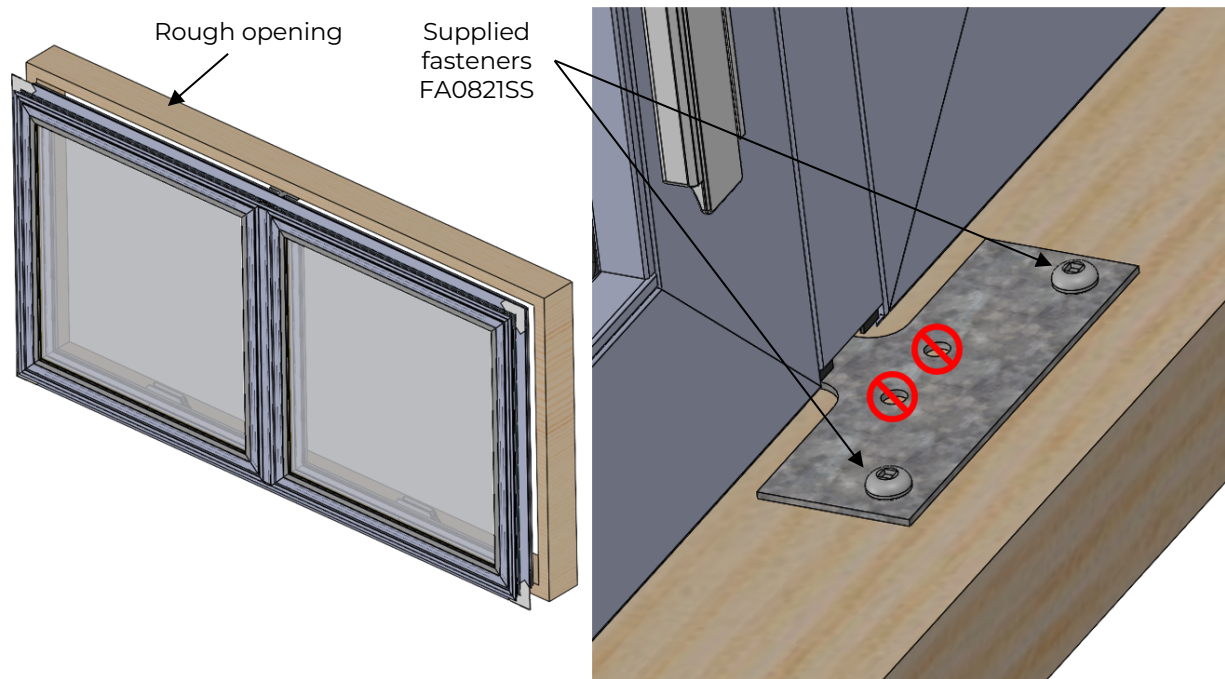
Step 1 - Anchor Installation

Insert the mull anchor in the end cap cavity. The mull anchor must be installed at both ends of the mull bar in the end cap cavity. If mull unit has more than 1 mull bar, each mull bar must have 2 mull anchors.



Step 2 – Mull Unit Installation

Insert the mull unit with the mull anchors into the rough opening. Secure the mull unit per [Milgard's Installation Recommendations for Mounting Fin Windows](#) or [Installation Recommendations for Flange \(z-Bar\) and Finless Windows](#) and [Fastener Schedule](#). Once the mull unit is secured to the rough opening, secure both mull anchors with the fasteners. Two (2) fasteners must be used per mull anchor. If mull unit has more than 1 mull bar, each mull bar must have 2 mull anchors with 2 fasteners per mull anchor.



The delta mull anchor installation is complete!

C700 DELTA MULL ANCHOR

MILGARD.
WINDOWS and DOORS

Success means getting it right
in every detail, every time.
Build boldly with MILGARD.

milgard.com

By MITER Brands™

A family of leading window and door
brands, united by our passion for
quality and relentless pursuit of 100%.

miterbrands.com